

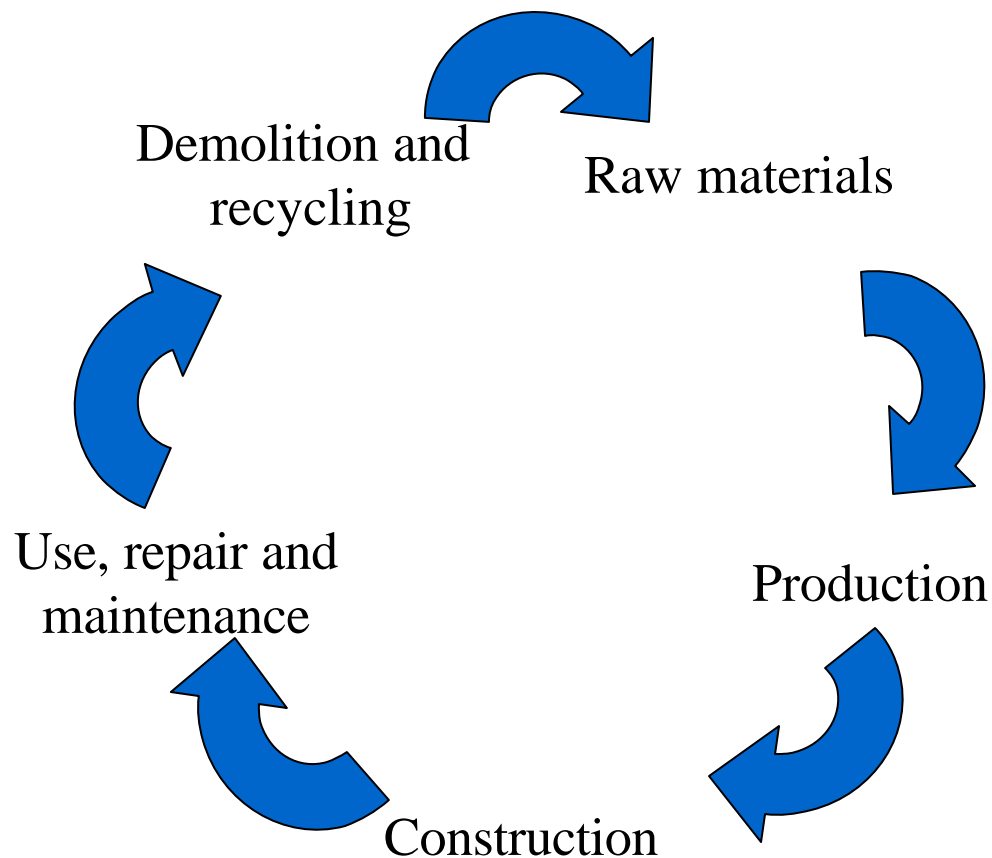
Task 2

Indicators and Benchmarking

Indicators addressing ECO-SERVE objectives

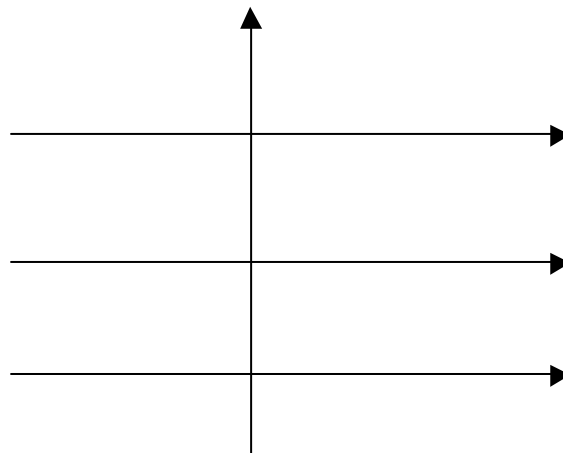
- Environmental impact
- Working environment
- Contribution to growth and wealth by increasing productivity, competitiveness and quality

Analyses of the whole lifecycle



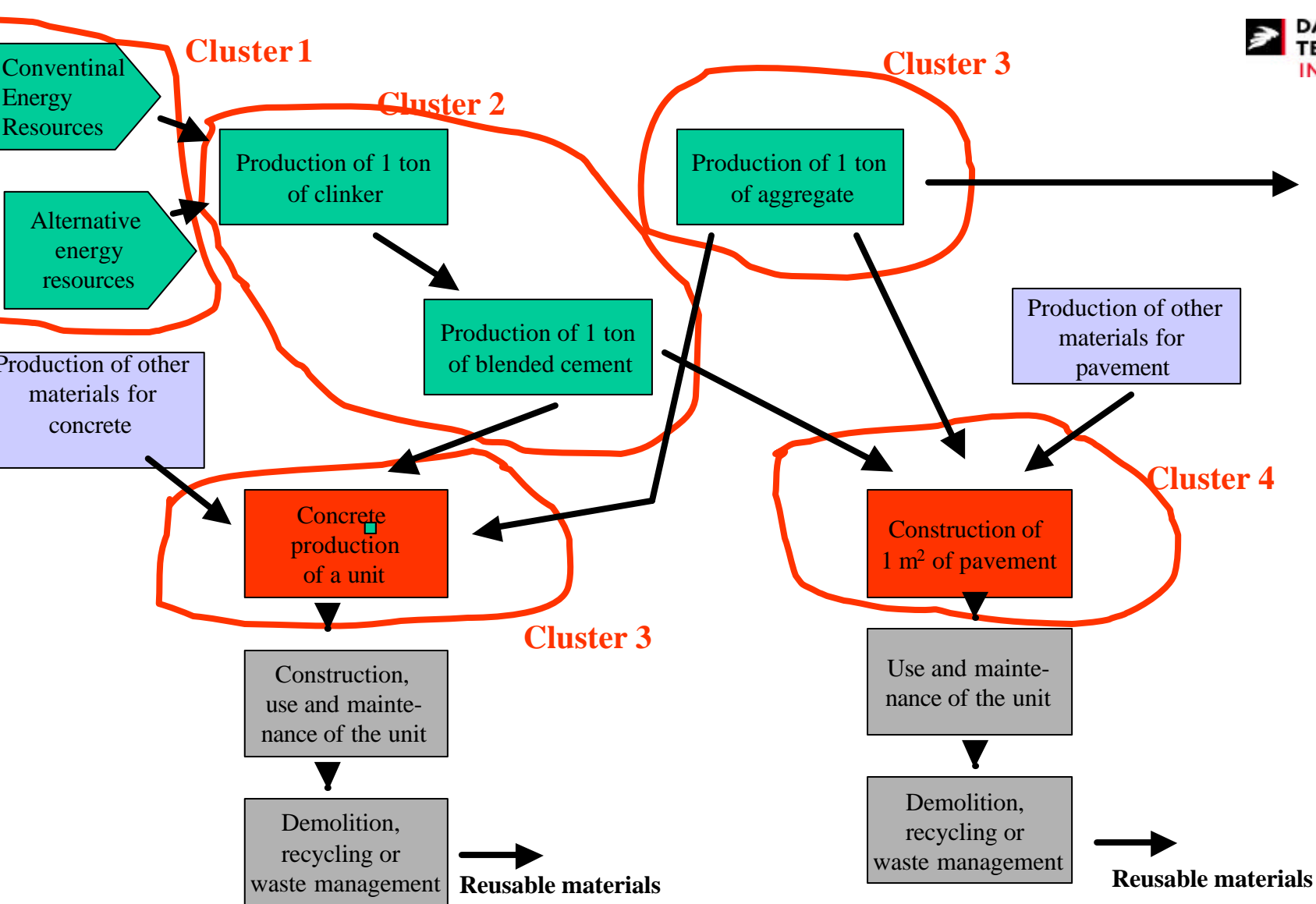
Three levels

- ➔ **R&D level**
- ➔ **BAT**
- ➔ **Baseline – average**

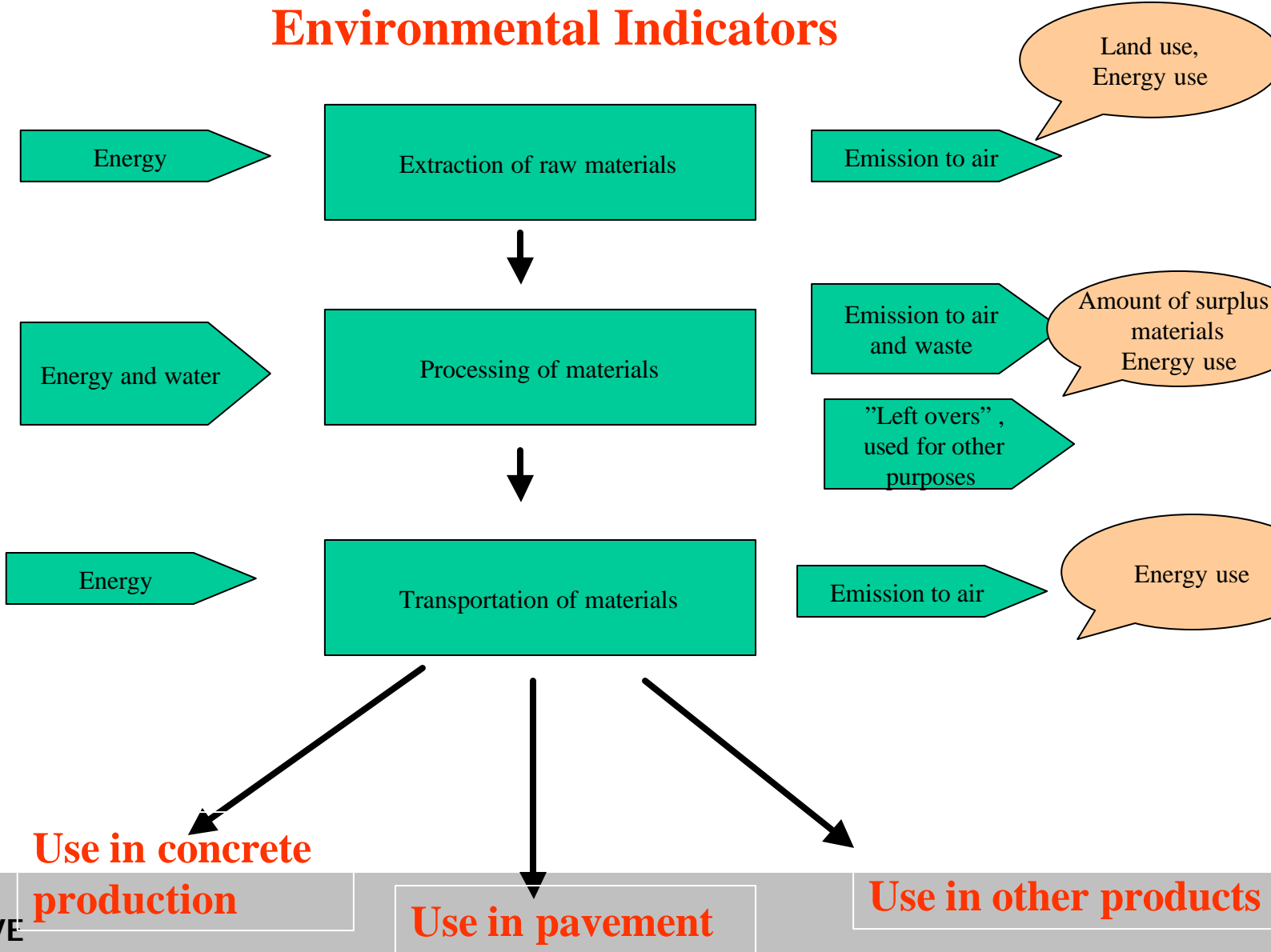


Task 2 in practice

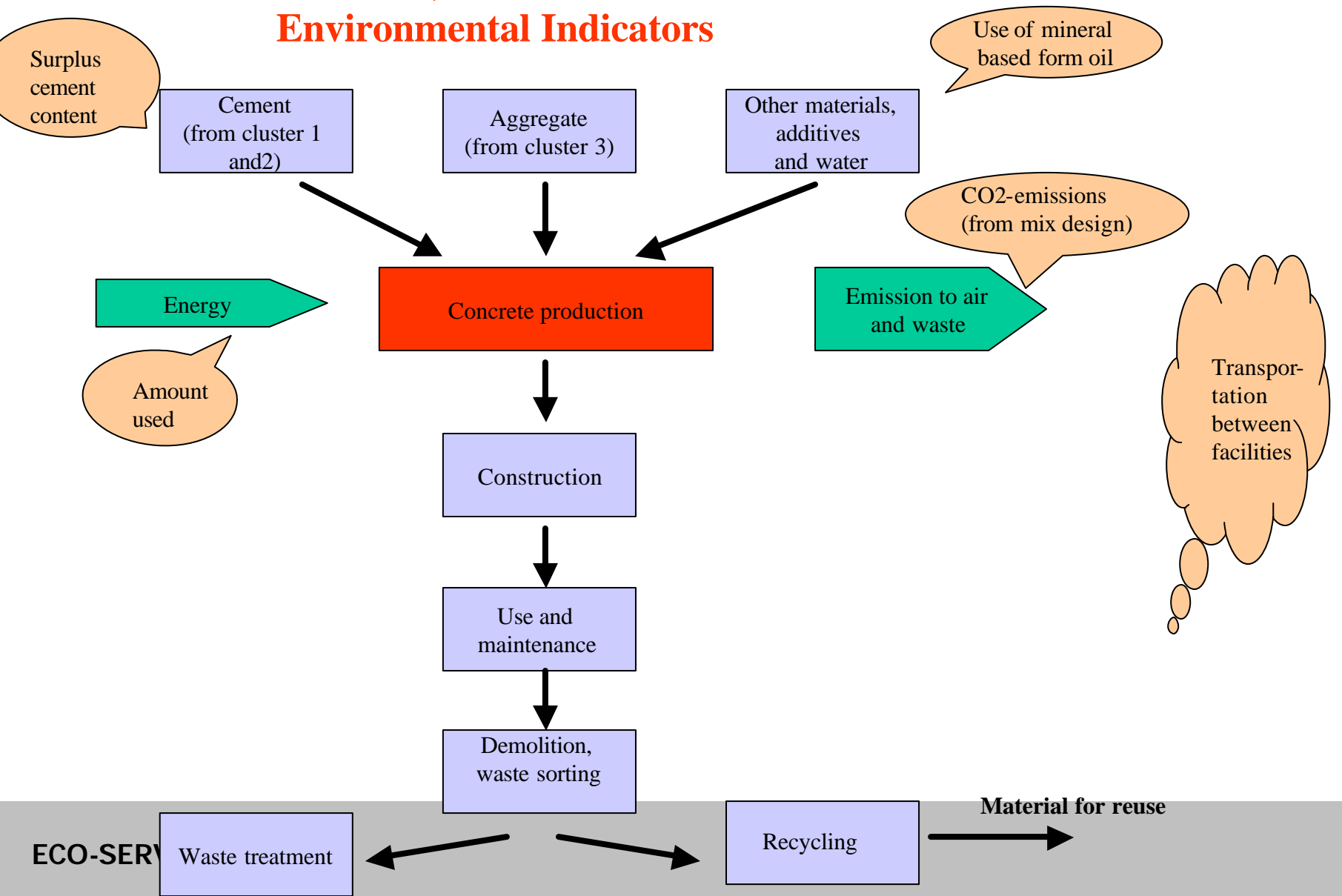
- ➡ **Prepare guidelines/examples**
- ➡ **Guidance to clusters - meetings etc.**
- ➡ **Data from literature, databases etc.**
- ➡ **Discussion**
- ➡ **Calculation tools**



Cluster 3, Aggregate, Environmental Indicators



Cluster 3, Concrete Production Environmental Indicators



Overall timetable

- ➔ Agreement with clusters about indicators, 1 November 2003 **1. March 2003**
- ➔ Calculation tool available, 1 January 2004 **1. March 2003**
- ➔ Baseline indicators ready, 1 January 2004 **1. March 2003**
- ➔ BAT indicators ready, 1 June 2004
- ➔ R&D indicators, 1 January 2005